

# CoA Unity & Justice Center

D Building Space Proposal



## Unity & Justice Center

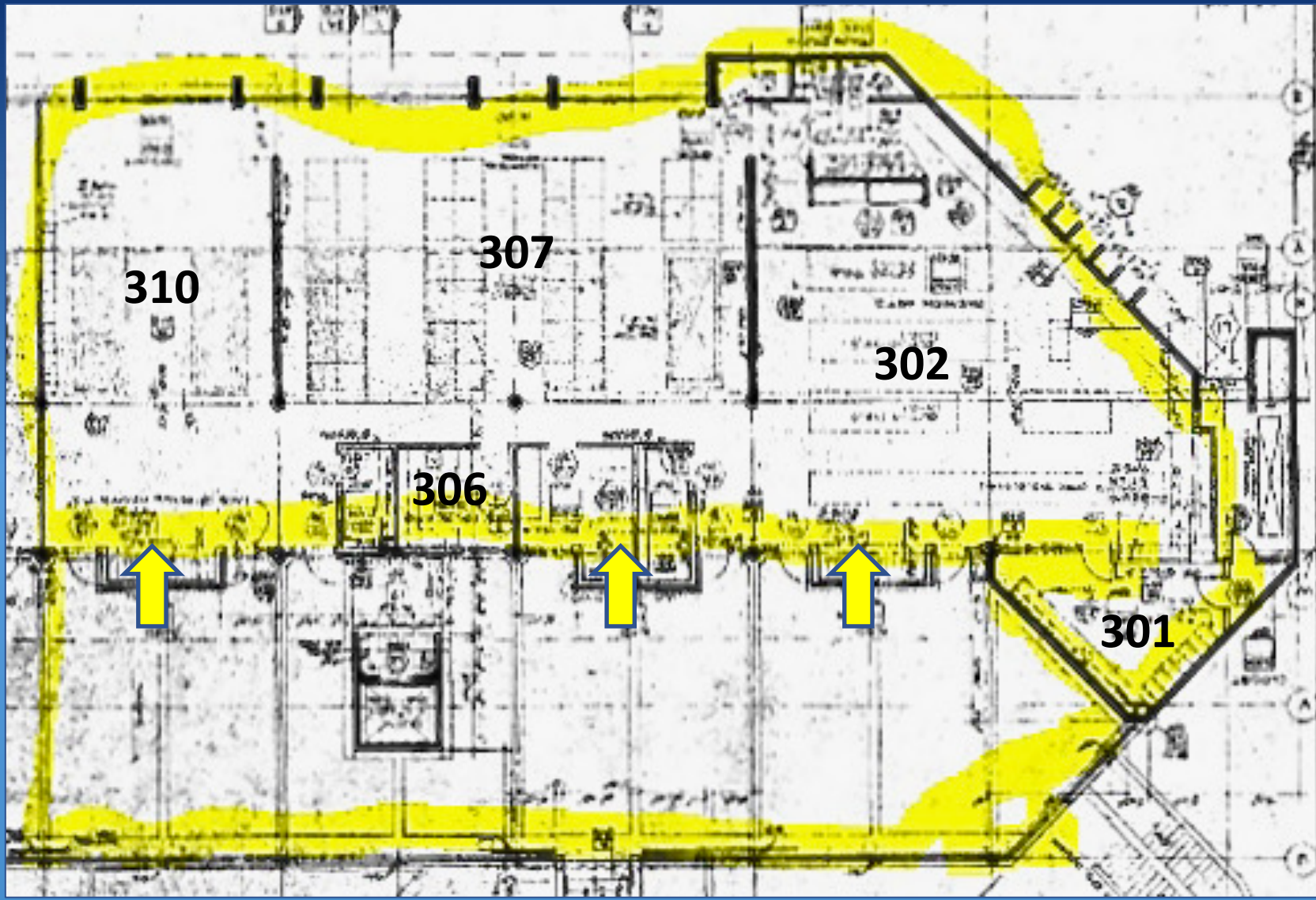
### *Philosophy Social Justice in action*

- The Center is designed to actively promote College of Alameda's strategic priorities focused on Diversity, Equity, Inclusion and Antiracism.
- The Center is grounded in the RP Group 6 factors for student success: a center to support students in focused, directed, nurtured, engaged, connected and valued ways through intentional justice focused programs.
- The Center will provide students, through cross-campus community collaborations and an intersectional, student centered environment, with transformative, impactful and socially conscious programs that allow them to grow academically, interpersonally, culturally and professionally, in order to advance their recruitment, matriculation, retention and graduation.
- The Center target populations include disproportionate equity student populations including African American students, LGBTQIA+ students, undocumented students, formerly incarcerated students. Also included are students who are dealing with food insecurity, housing insecurity or are unhoused.



# D building 3<sup>rd</sup> Floor Proposal

Rooms: 301,302,306,307,  
310





# Unity & Justice Center Proposed Programs

- UMOJA Community
- Salaam Community
- Rising Scholars Community (Formerly New Dream)
- Undocumented Student Success Office
- LGBTQIA+ Student Success Office (TBD)
- Basic Needs Office
- CoA Cougar Store
- CoA Cougar Closet
- External Partners Offices- Basic Needs, Legal Assistance, Housing, etc.
- Common Intersectional Community Space



# UMOJA Community



- Learning community serving African, African American and other Students
- Current enrollment: 52  
Anticipated enrollment: 100
- Current Location: Library
- Space Requirements:
  - Counselor Office
  - Instructor Office
  - Peer Mentor Office
  - Community space



# Salaam Community

السلام عليكم

- Learning community serving Arab and Arabic speaking students
- Current enrollment: (EOPS: approximately 50)  
Anticipated enrollment: 100
- Current Location: None
- Space Requirements:
  - Counselor Office
  - Instructor Office
  - Peer Mentor Office
  - Community space
  - Meditation Space- (F building)



# Rising Scholars



- Serving formerly incarcerated students
- Current enrollment: 11  
Anticipated enrollment: 40
- Current Location: None
- Space Requirements:
  - Counselor Office
  - Transition Liaison Program Manager
  - Peer Mentor Office
  - Community space



# Basic Needs

#REALCOLLEGE™

Mobile Pantry

CoA Cougar Store- Food, Personal Care Products

CoA Cougar Closet

Community Based Organization Office- Basic Needs

Basic Needs Coordinator

Current Location: None

Space Requirements:

- Store Space
- Closet/Dressing Room Space
- CBO Office
- Coordinator Office





# Undocumented Student Success



Community Based Organization Office-

Peer Mentoring

Undocumented Student Success Coordinator

Current enrollment: 20

Anticipated enrollment: 40

Current Space: None

Space Requirements:

- Community Based Organization Office
- Peer Mentor Office
- Coordinator Office
- Community Space



# Unity & Justice Center Community Space Concept

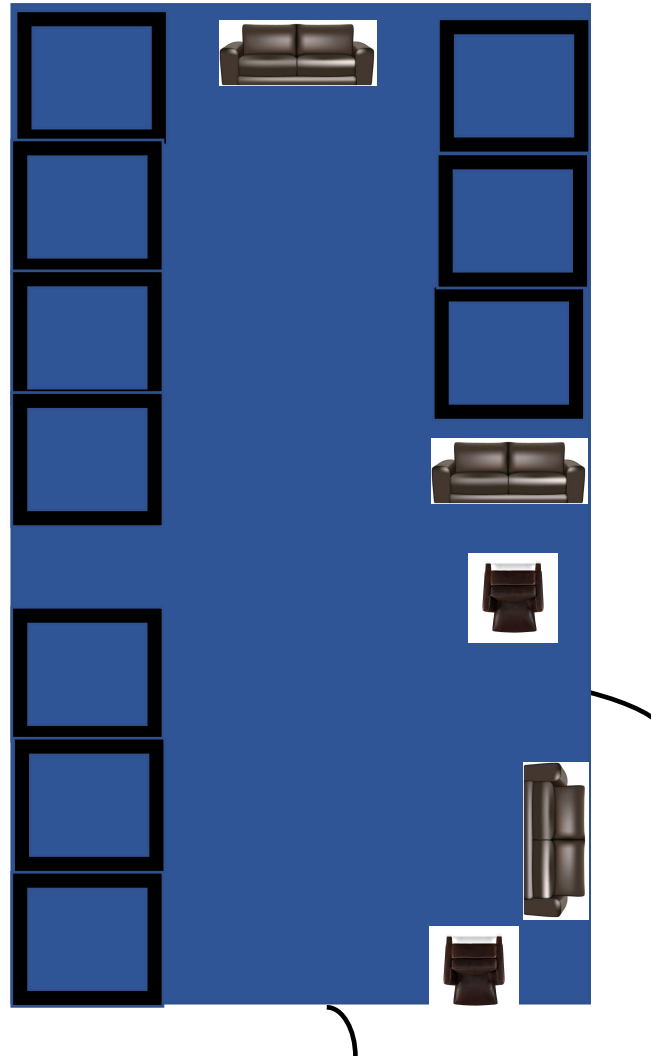
- UMOJA Community Workshops and Events
- Salaam Community Workshops and Events
- Undocumented Student Success Workshops and Events
- LGBTQIA+ Student Success Workshops and Events
- Intersectional Community Workshops and Events
- Community Based Organization workshops
- Student connection, study space, community building, computer access
- Outdoor Community Space



# D Building Room 310 Proposal

## Learning Community Offices

- UMOJA
  - Counselor
  - Instructor
  - Peer Mentor
- Salaam
  - Counselor
  - Instructor
  - Peer Mentor
- Rising Scholars
  - Counselor
  - Peer Mentor
- Adult Education
  - Program Manager

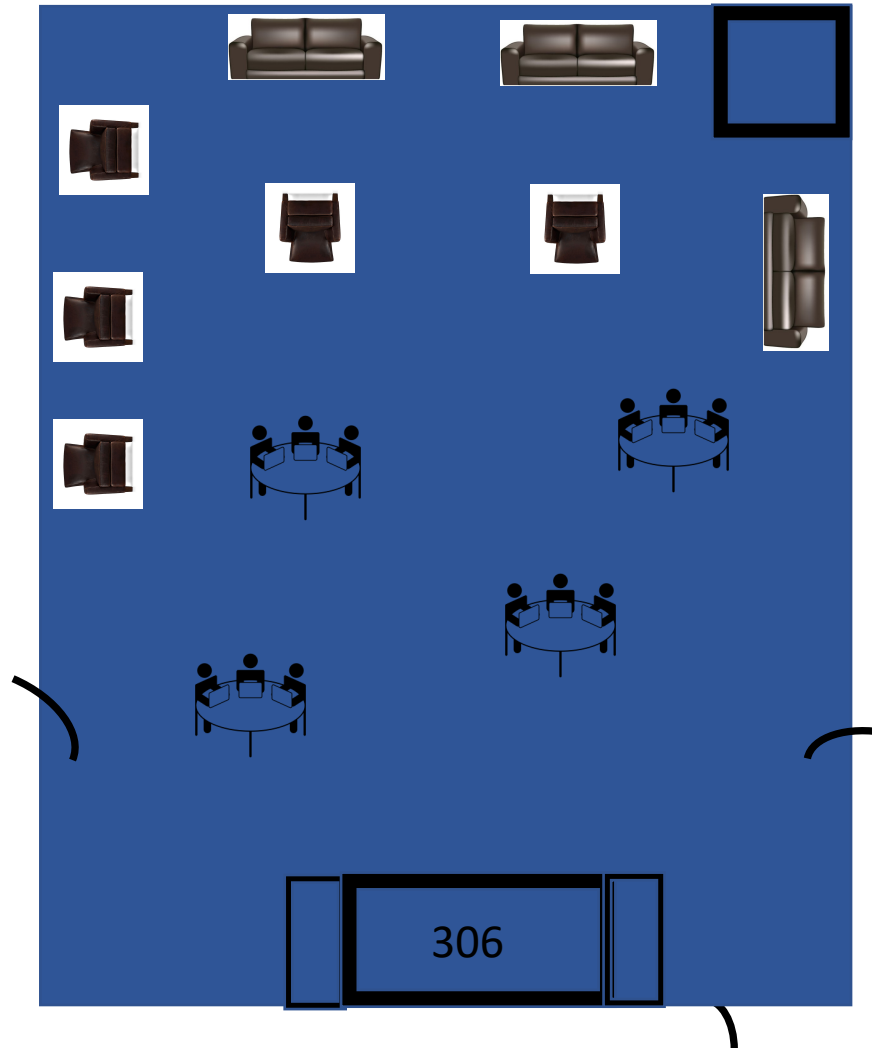




# D Building Room 307 Proposal

## Community Space

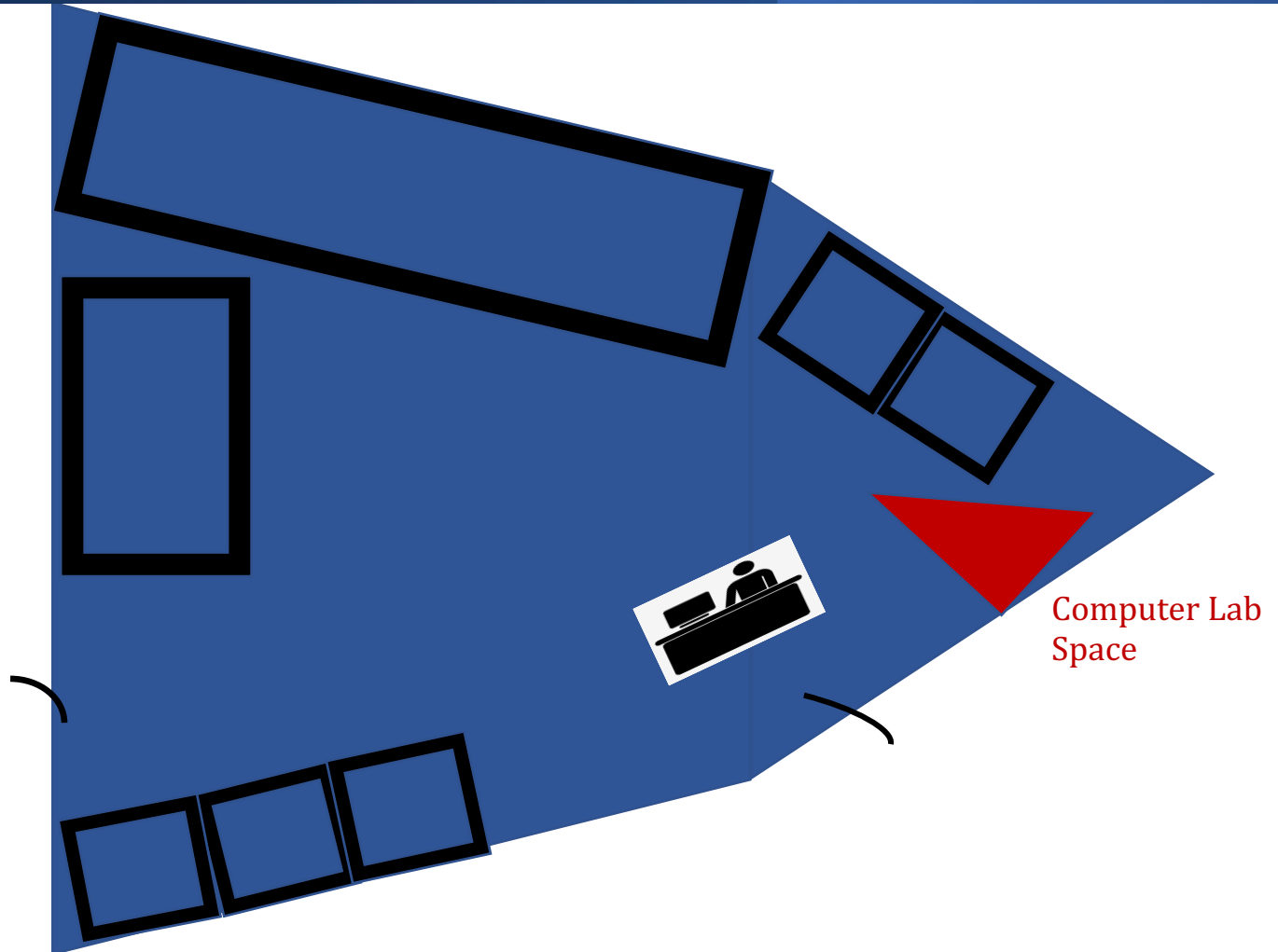
- Associate Dean(306)
- Staff Assistant
- Study Space
- Community/Event Space





# D Building Room 302 Proposal

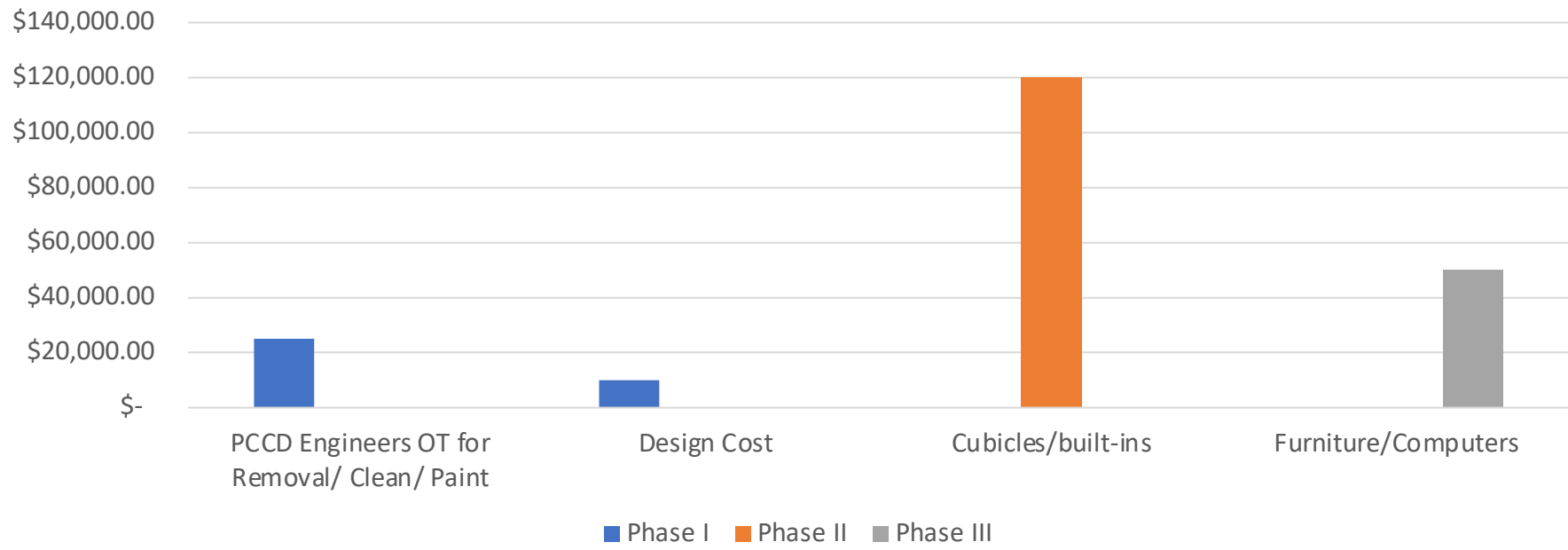
- Center Reception Desk
- Basic Needs
  - Store
  - Closet/dressing room
  - External Partners Office
  - Coordinator Office
- Undocumented Student Success Office
  - Coordinator Office
  - External Partners Office
- LGBTQIA+ Student Success Office
- Computer Lab





# Unity & Justice Center Space Budget

## Projected D Building Proposal Costs \$205,000



Where possible current cubicles and equipment will be repurposed to adjust costs.